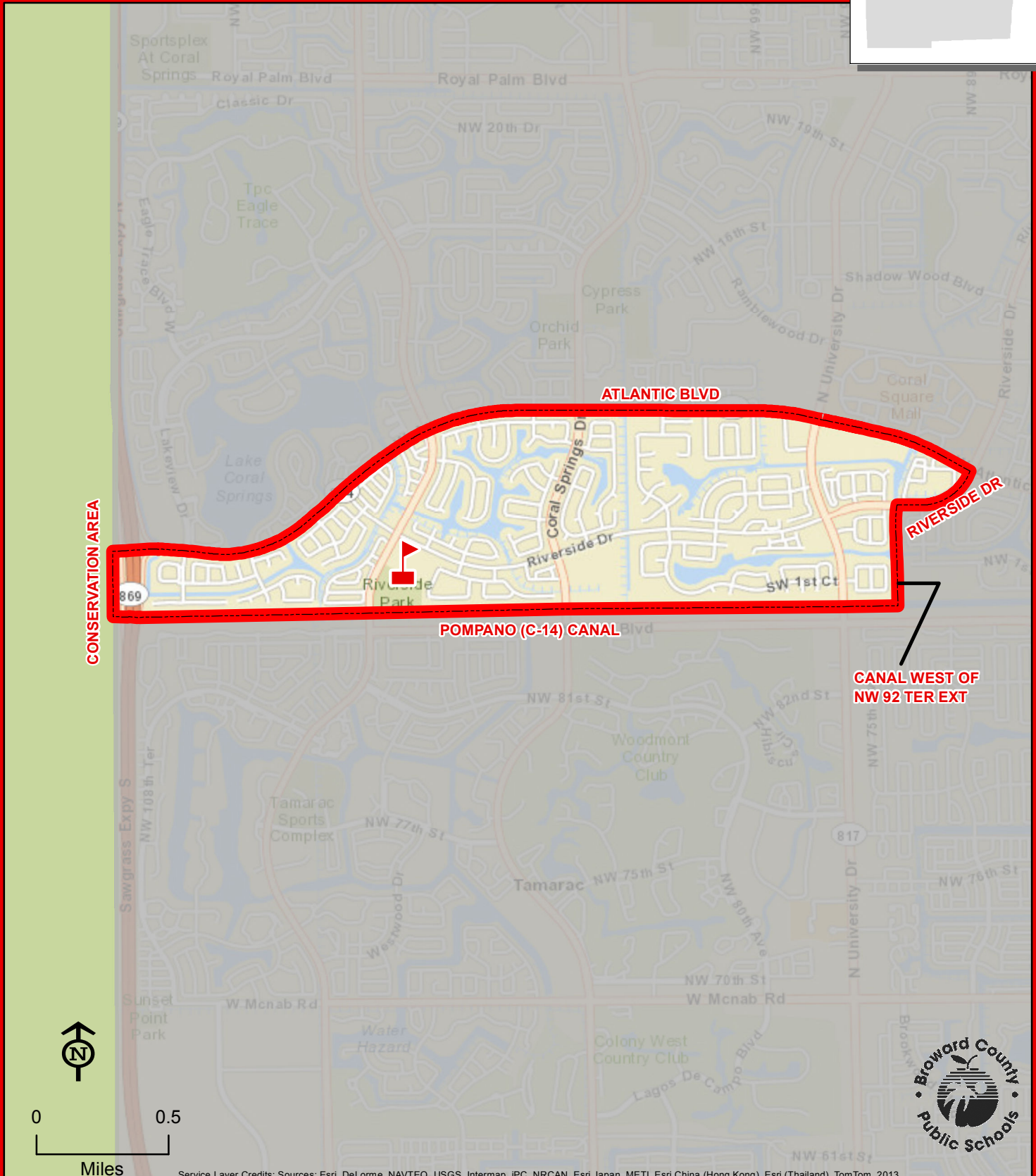
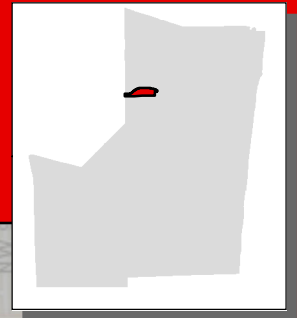


RIVERSIDE ELEMENTARY SCHOOL

11450 RIVERSIDE DRIVE
CORAL SPRINGS, FLORIDA 33071
754-322-8250



CONSERVATION AREA

ATLANTIC BLVD

RIVERSIDE DR

POMPANO (C-14) CANAL

CANAL WEST OF
NW 92 TER EXT

RIVERSIDE



0 0.5
Miles

Service Layer Credits: Sources: Esri, DeLorme, NAVTEQ, USGS, Intermap, IPC, NRCAN, Esri Japan, METI, Esri China (Hong Kong), Esri (Thailand), TomTom, 2013



THIS MAP IS FOR CONCEPTUAL PURPOSES ONLY AND SHOULD NOT BE USED FOR LEGAL BOUNDARY DETERMINATIONS